



COMUNE DI MALALBERGO

BOLOGNA

DESCRIZIONE DEL SERVIZIO:

SERVIZIO DI MANUTENZIONE DELLE AREE VERDI PUBBLICHE DEI COMUNI
DI BARICELLA E MALALBERGO PER IL PERIODO 2020 - 2021

OGGETTO:

PLANIMETRIE AREE ALTEDO
(Lotto 2 – Comune di Malalbergo)

SPAZIO RISERVATO ALL'UFFICIO TECNICO:

COMMITTENTE:

COMUNE DI MALALBERGO

PROGETTISTA E R.U.P.:

Geom. Federico Ferrarato

Responsabile Settore Pianificazione e Gestione del Territorio

COLLABORATORE TECNICO:

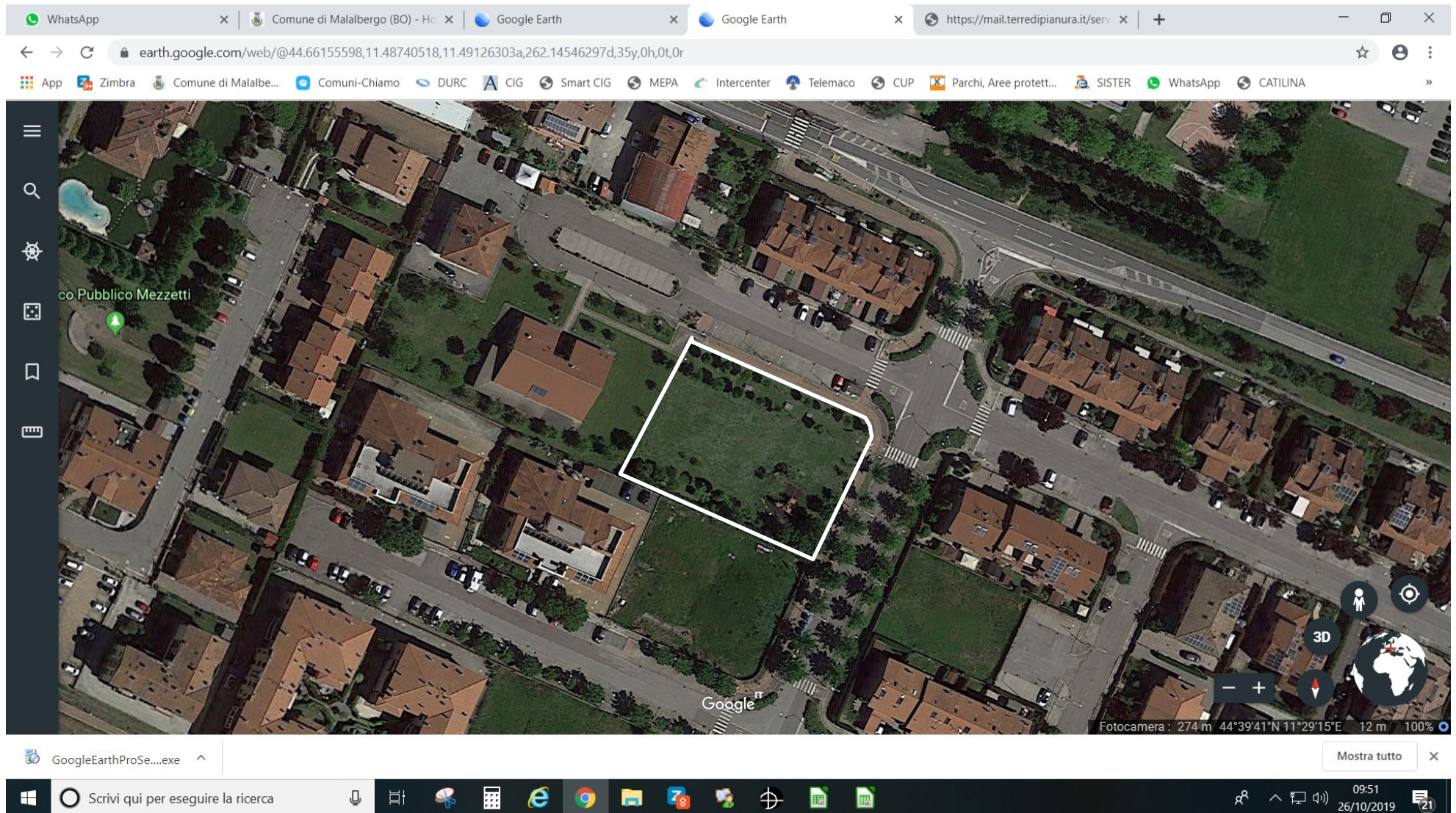
Geom. Pierluigi Carta

| | | | |
|-----|--|--|------------------------------|
| 3 | | | ELABORATO: 6/4 |
| 2 | | | |
| 1 | | | |
| REV | | | |
| . | | | |

ALTEDO (Comparto Thedus) - MQ 15200 (esclusa area giochi)



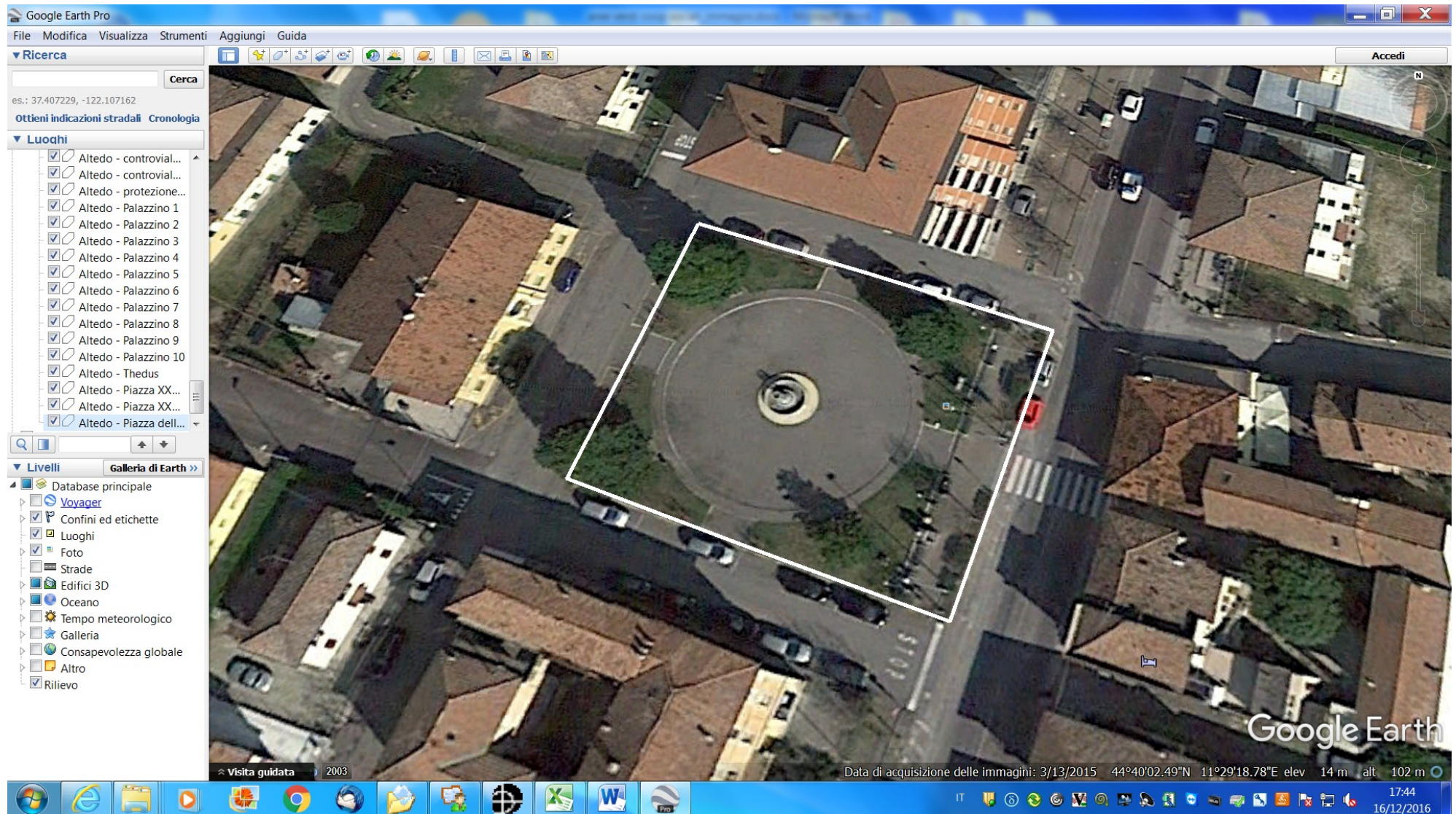
ALTEDO (Comparto Thedus, area giochi) - MQ 2000



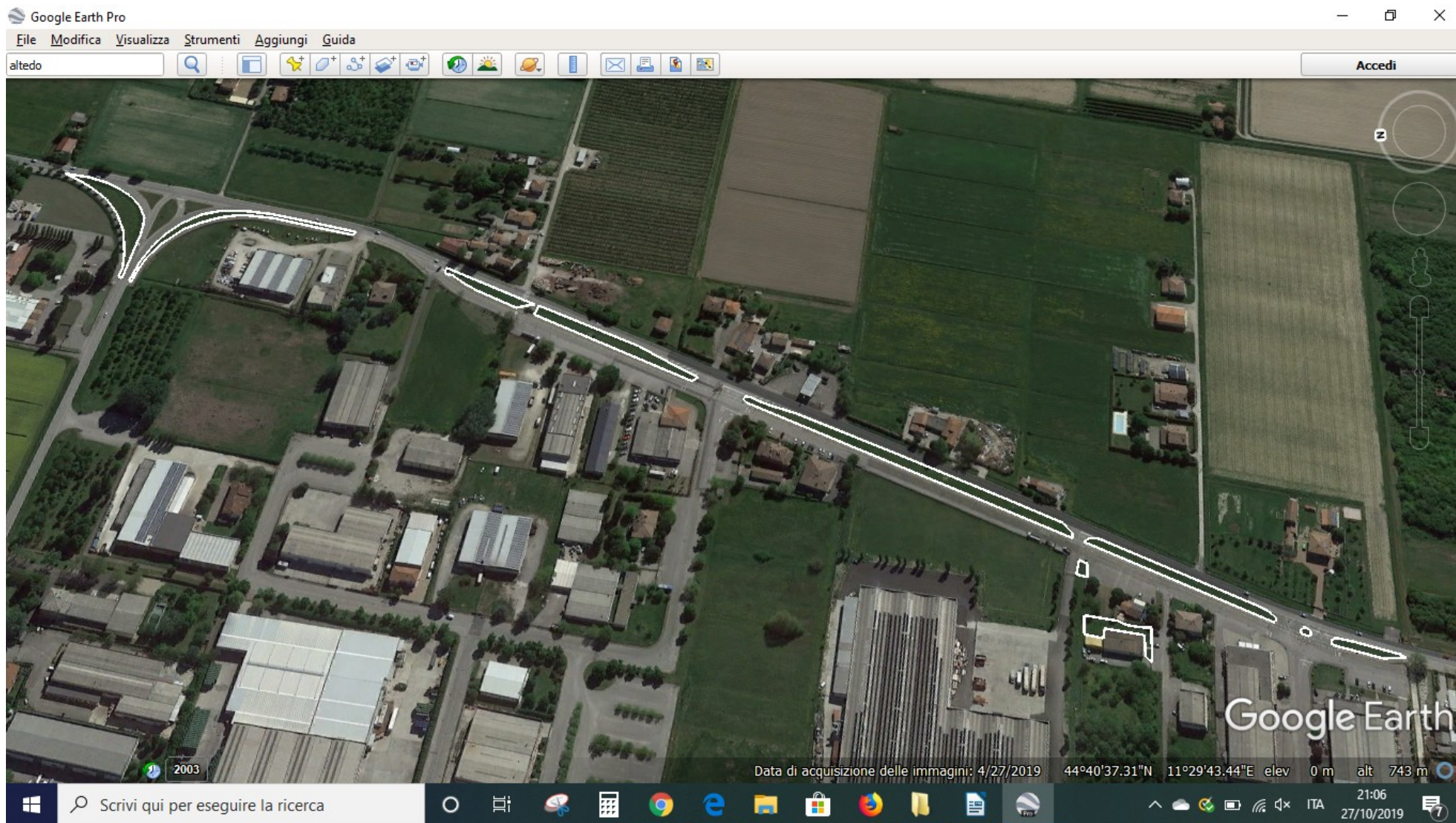
ALTEDO (Piazza XXV Aprile + aiuola lato opposto) - MQ 1870



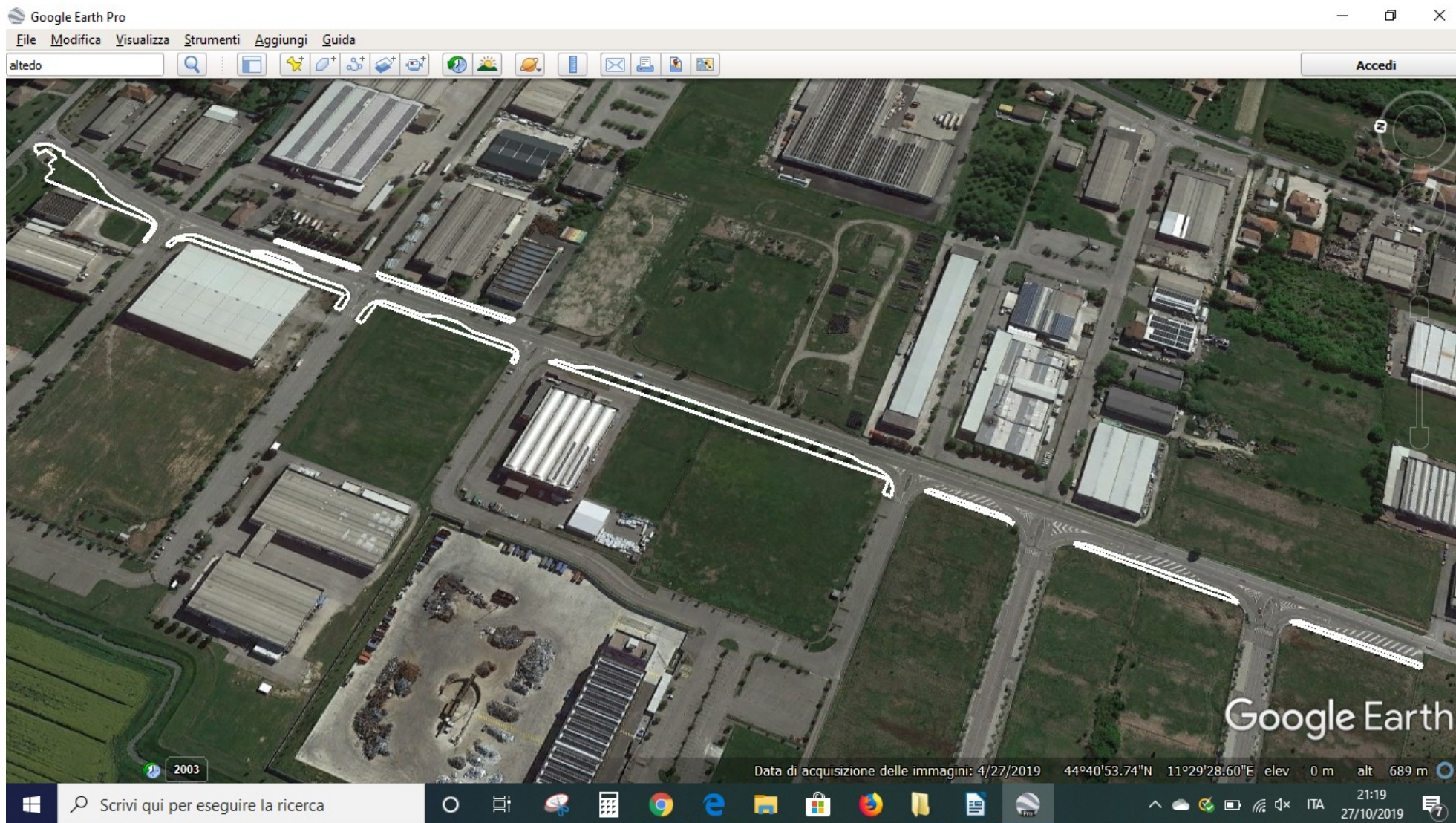
ALTEDO (Piazza della Pace) - MQ 405



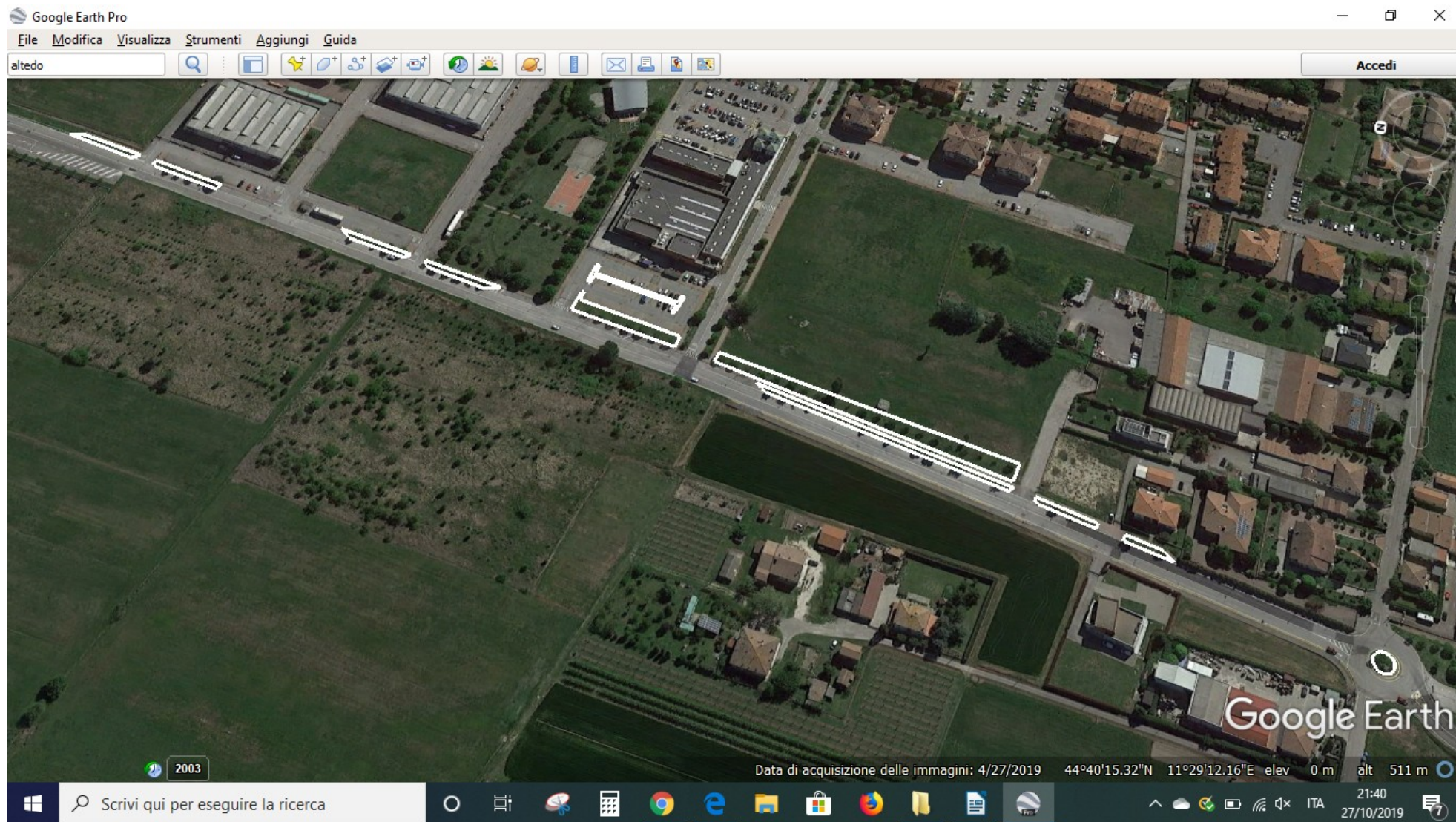
ALTEDO (Incrocio Via Chiavicone - Controviale Via Nazionale – Protezione civile) MQ 4915



ALTEDO (Viale 11 Settembre, da Via Chiavicone a Consorzio Altedo 2008) – MQ 6250



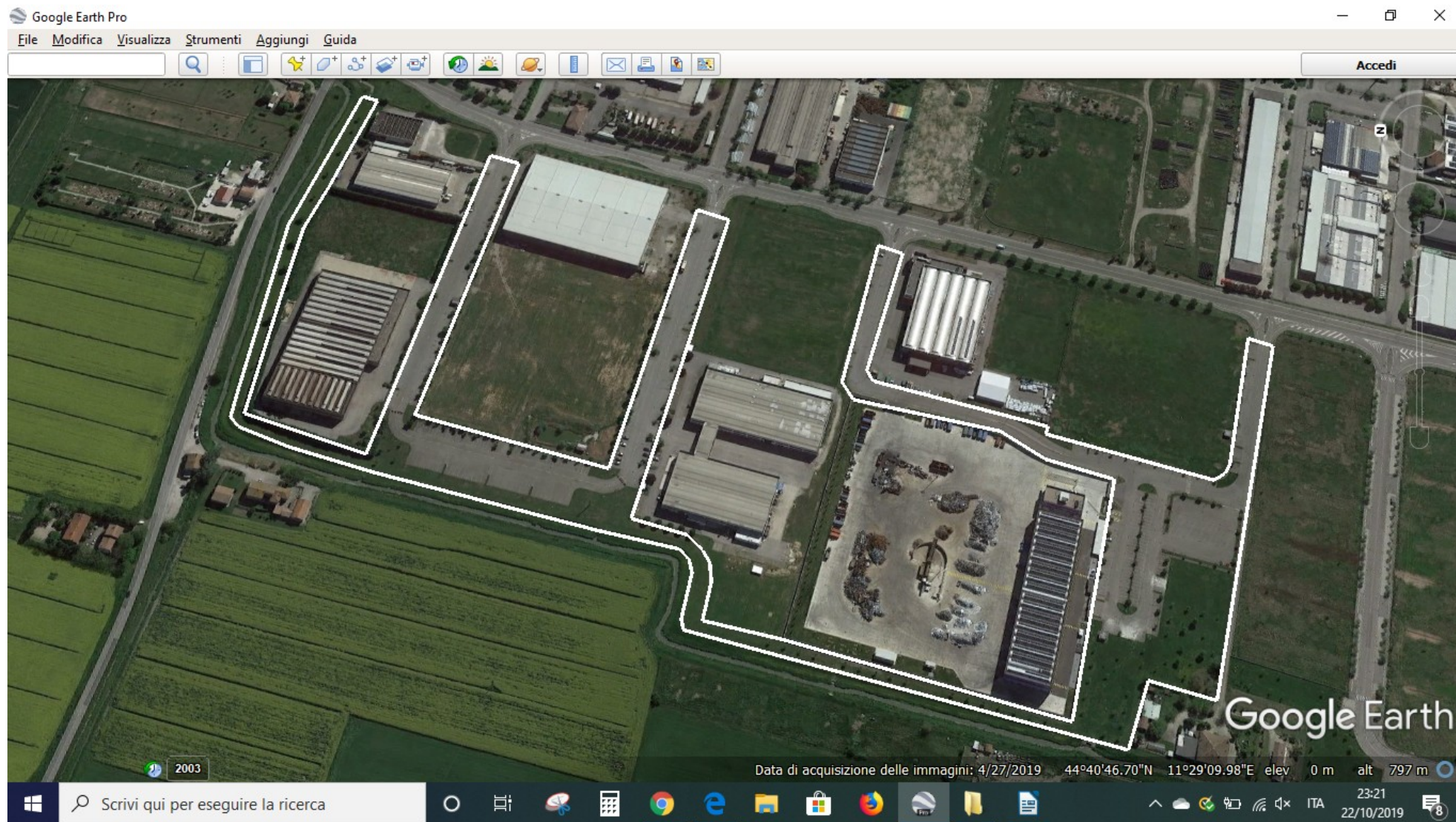
ALTEDO (Viale 11 Settembre, da Consorzio Altedo 2008 a Via Roma) – MQ 2600



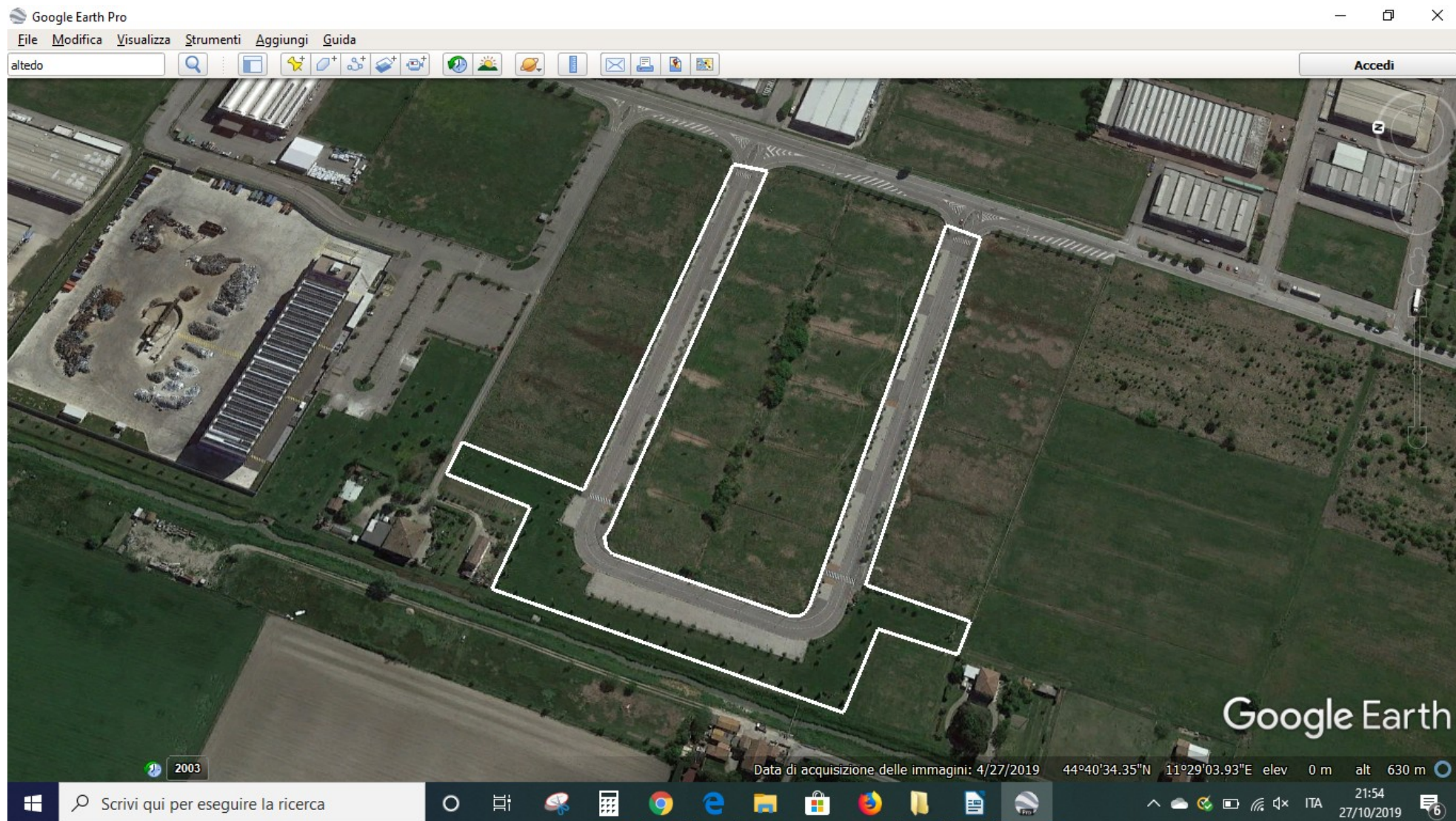
ALTEDO (Via del Palazzino) – MQ 3335



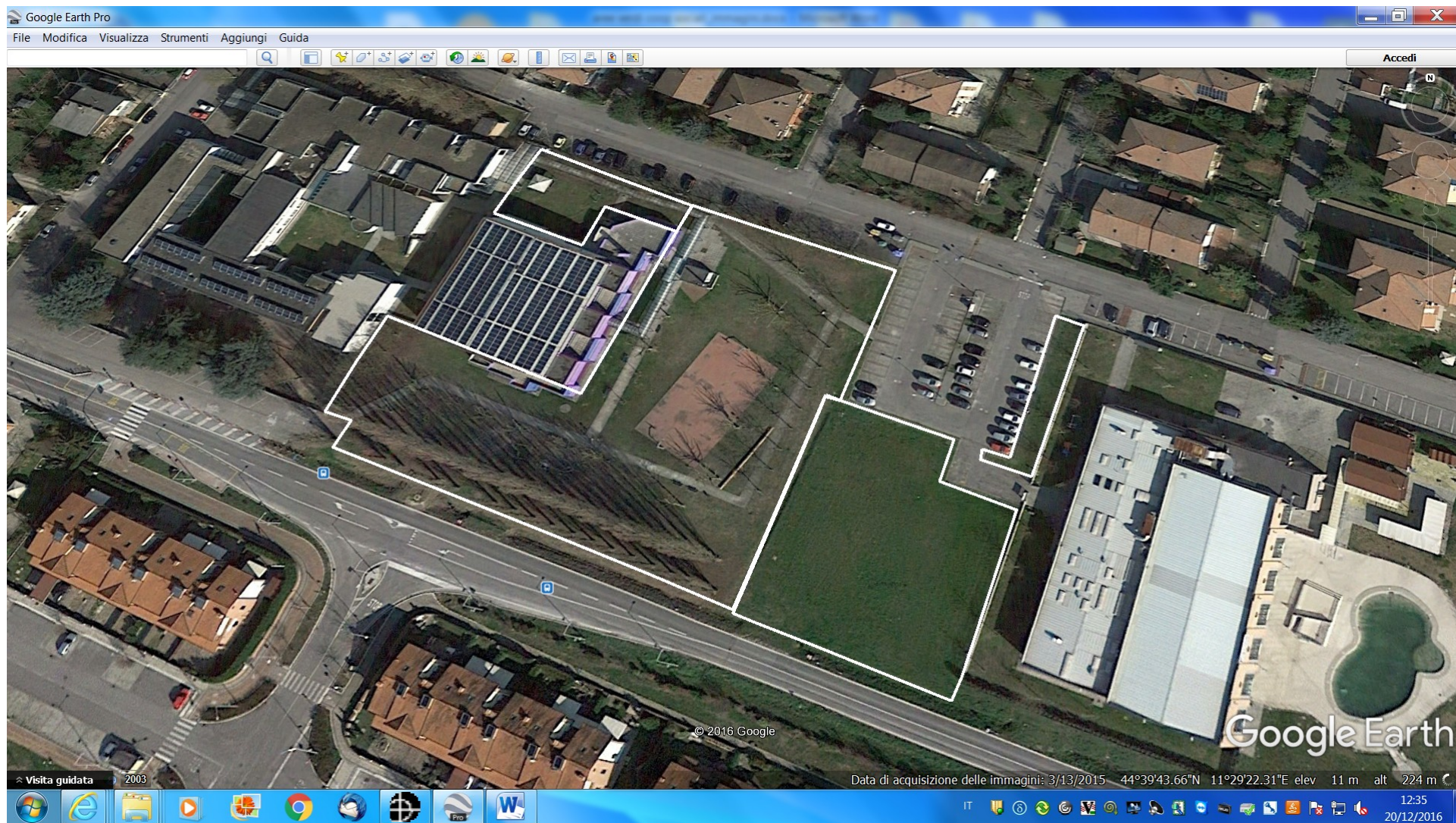
ALTEDO (Zona Artigianale Via Pontevorvo + Via Fellini, comprese aiuole alberi) – MQ 21700



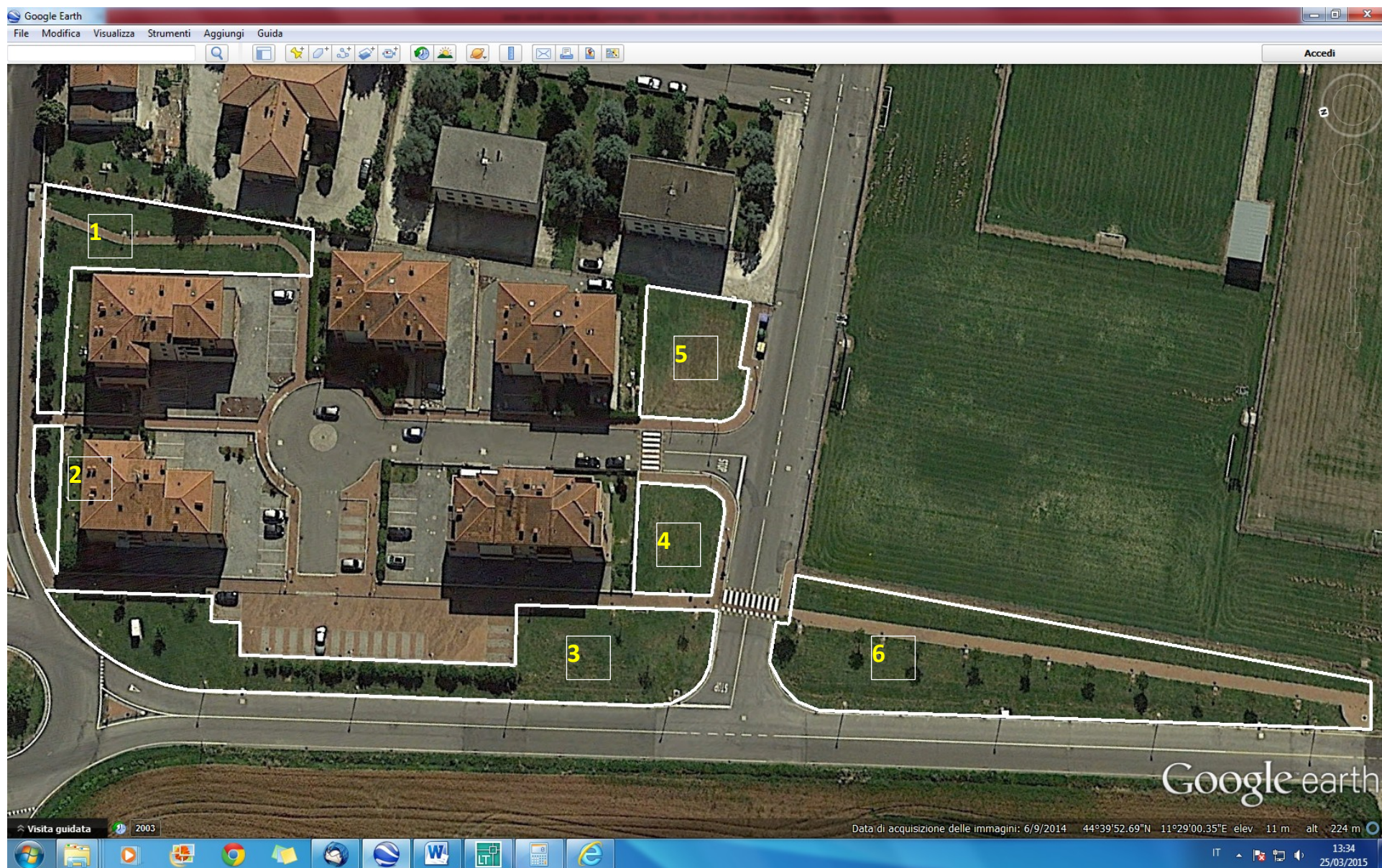
ALTEDO (Consorzio Altedo 2008, comprese formelle alberi) - MQ 7870



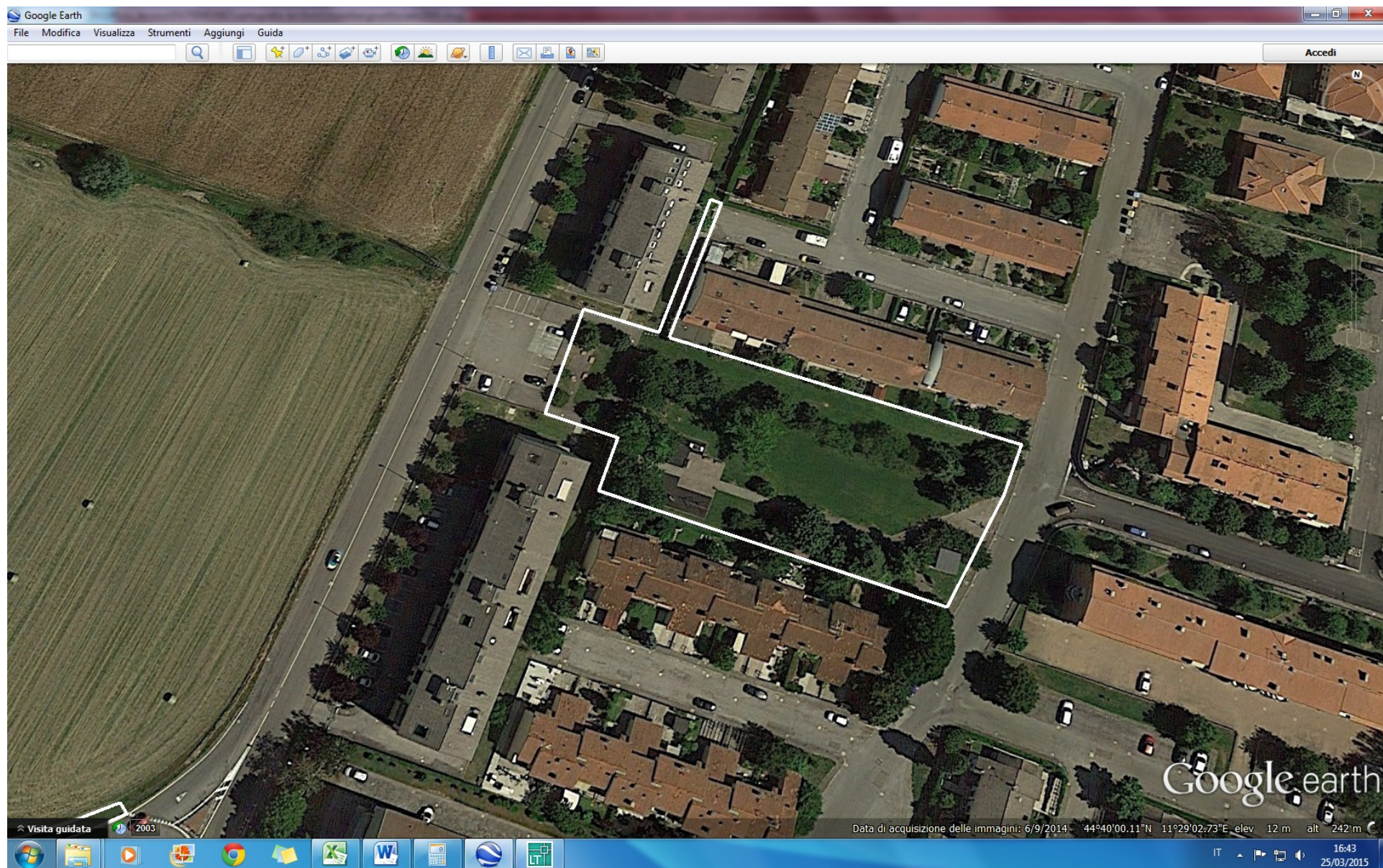
ALTEDO (Via Gagarin – Parco Palestra) - MQ 7700



ALTEDO (Via Bentini + Via Castellina) - (1 → MQ 706; 2 → MQ 115; 3 → MQ 1302; 4 → MQ 292; 5 → MQ 394; 6 → MQ 1920)
SUP. TOT. MQ 4729



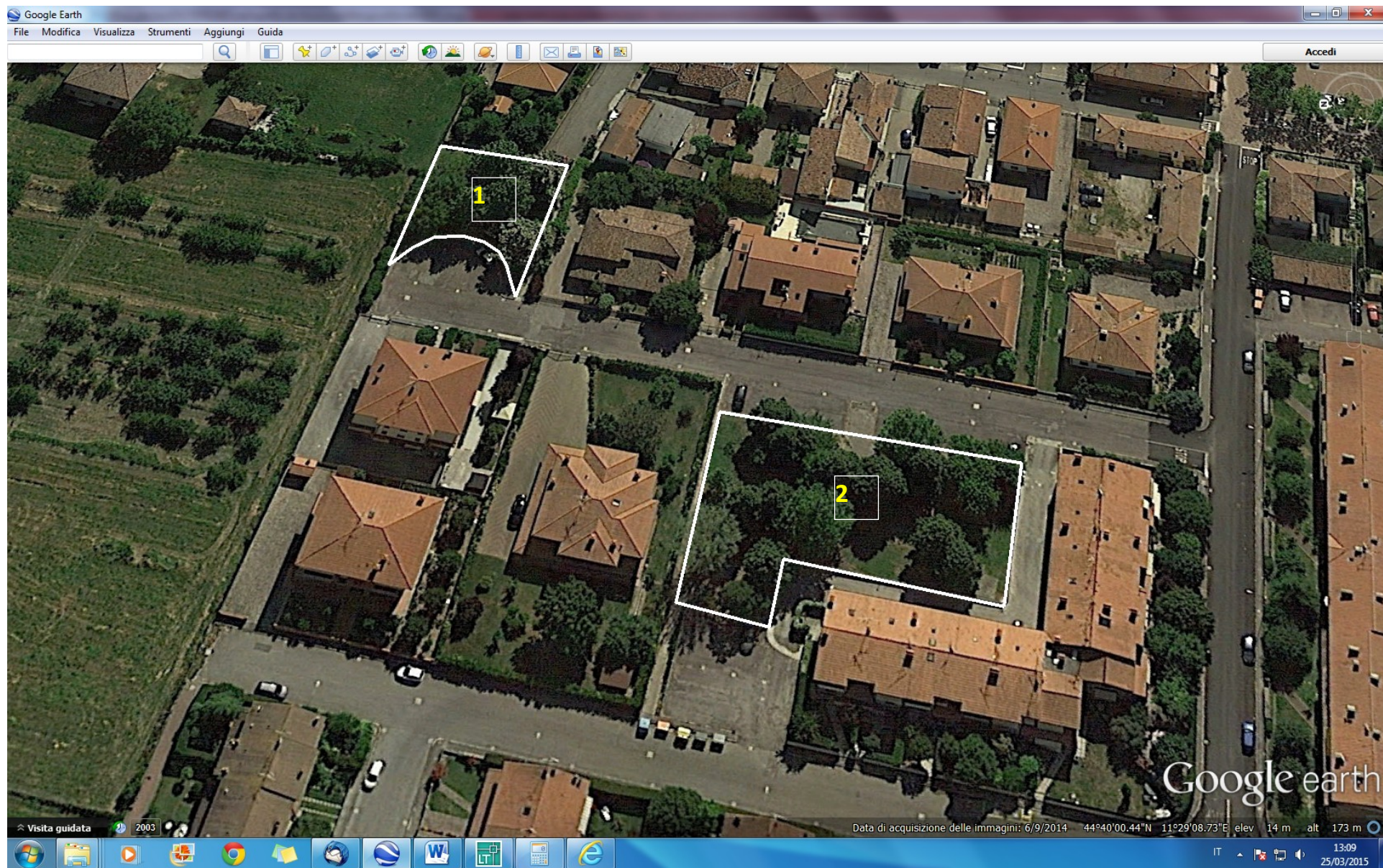
ALTEDO (Via Gardi) - MQ 3500



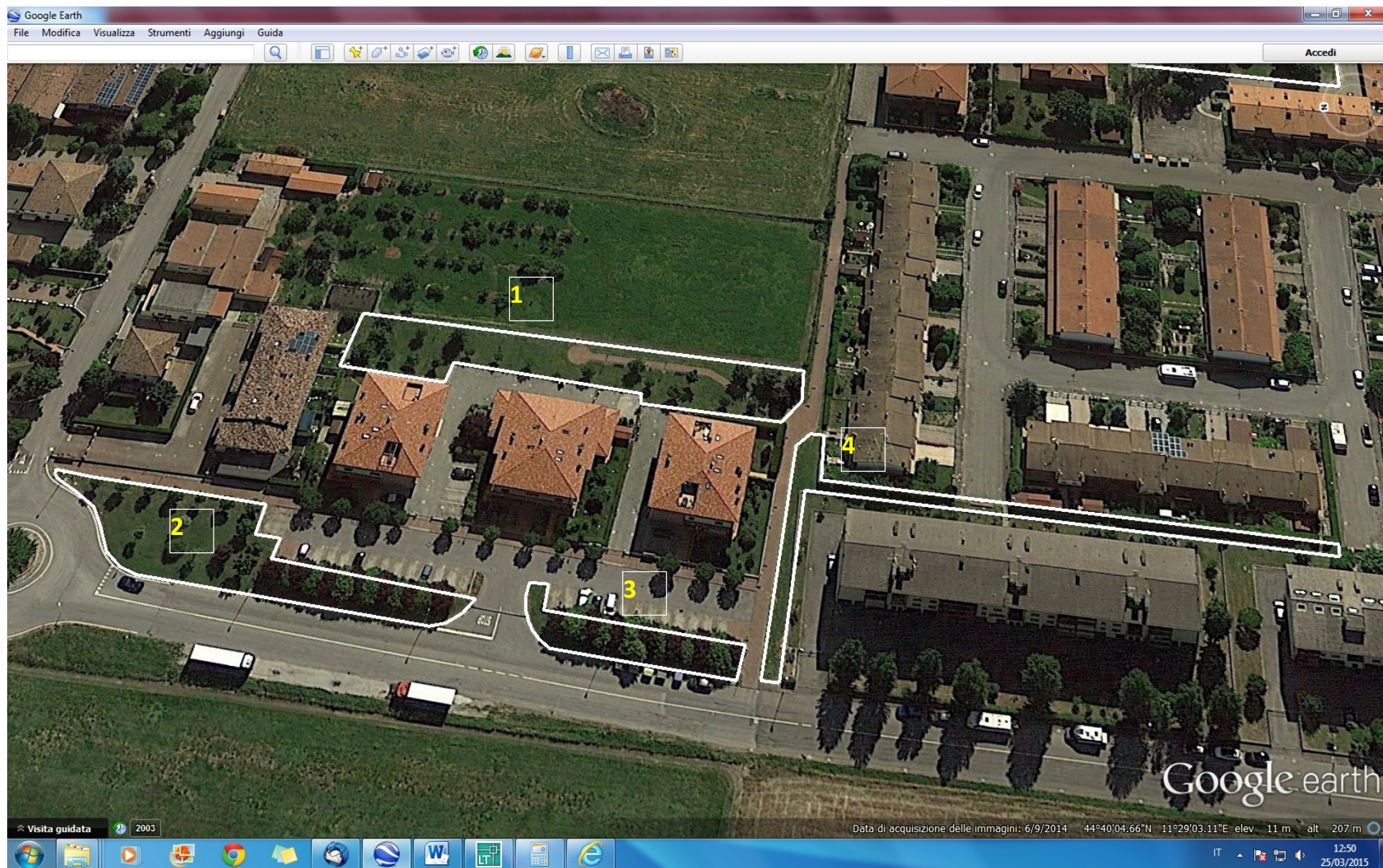
ALTEDO (Via Castellina) - (1 → MQ 314; 2 → MQ 670; 3 → MQ 750) – SUP. TOT. MQ 1734



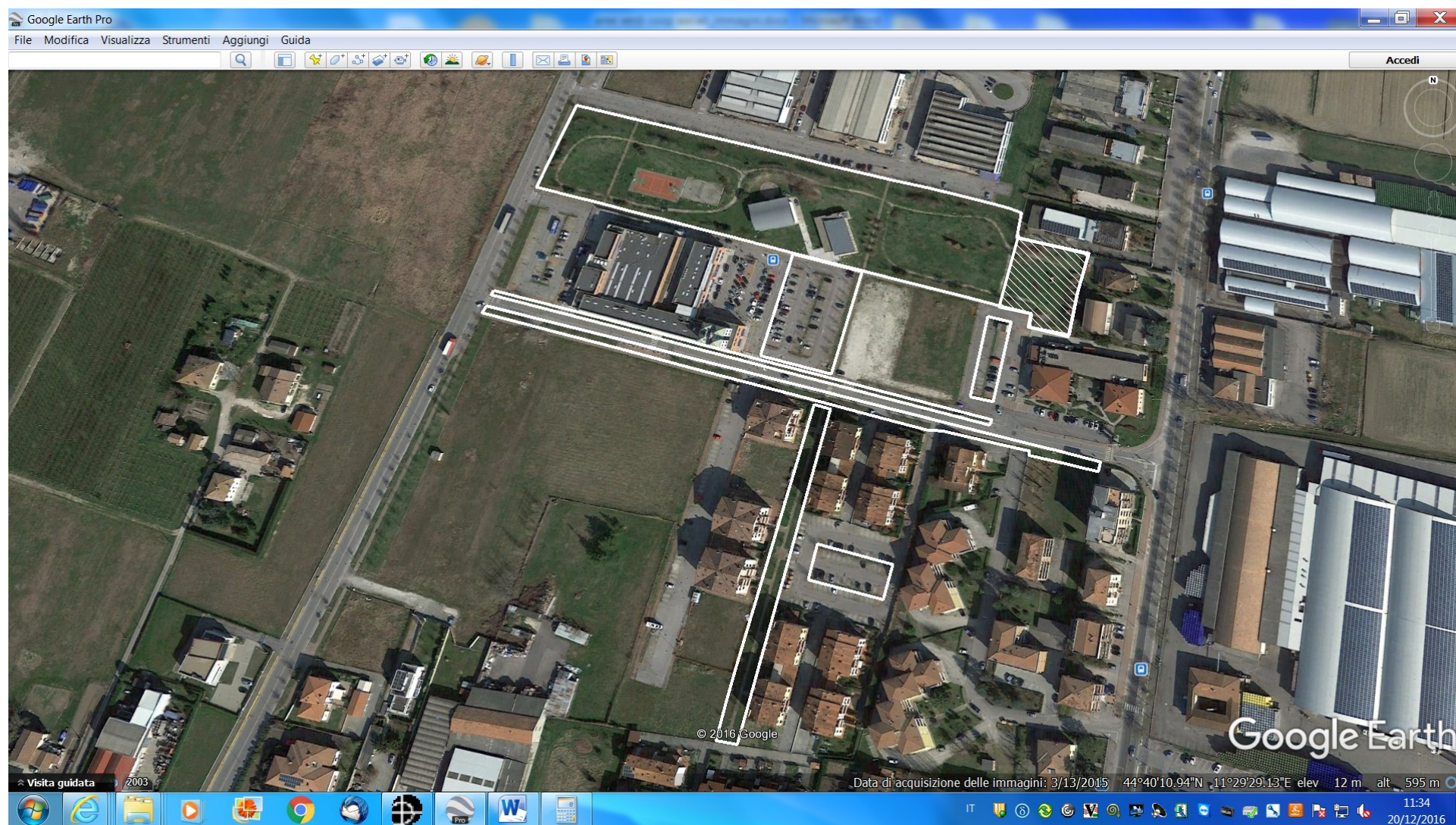
ALTEDO (Via Pezzoli) - (1 → MQ 535; 2 → MQ 1195) – SUP. TOT. MQ 1730



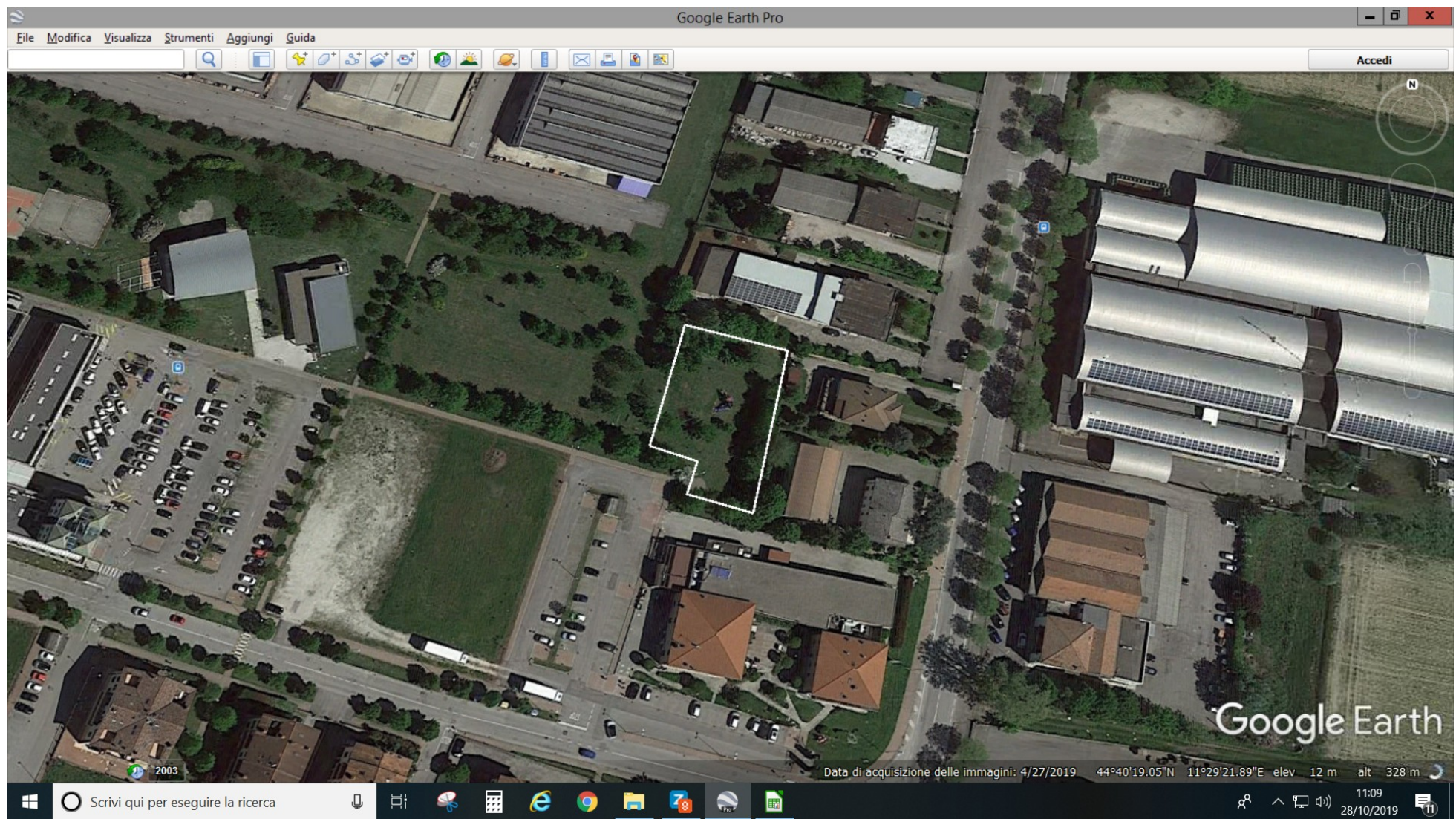
ALTEDO (Via Ortolani) – (1 → MQ 1170; 2 → MQ 1030; 3 → MQ 260; 4 → MQ 700) – SUP. TOT. MQ 3160



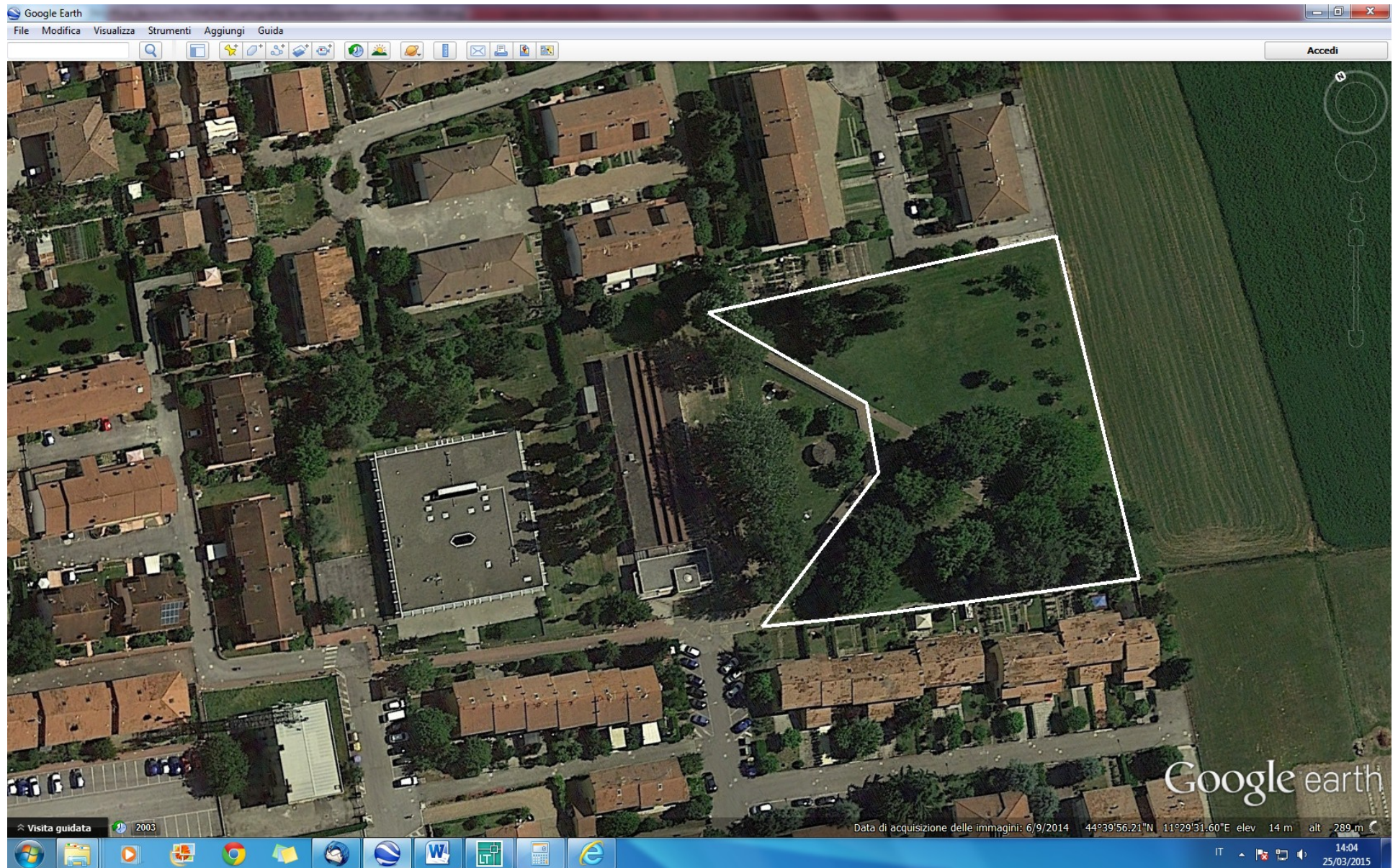
ALTEDO (Via Minghetti, esclusa area giochi) - MQ 22800



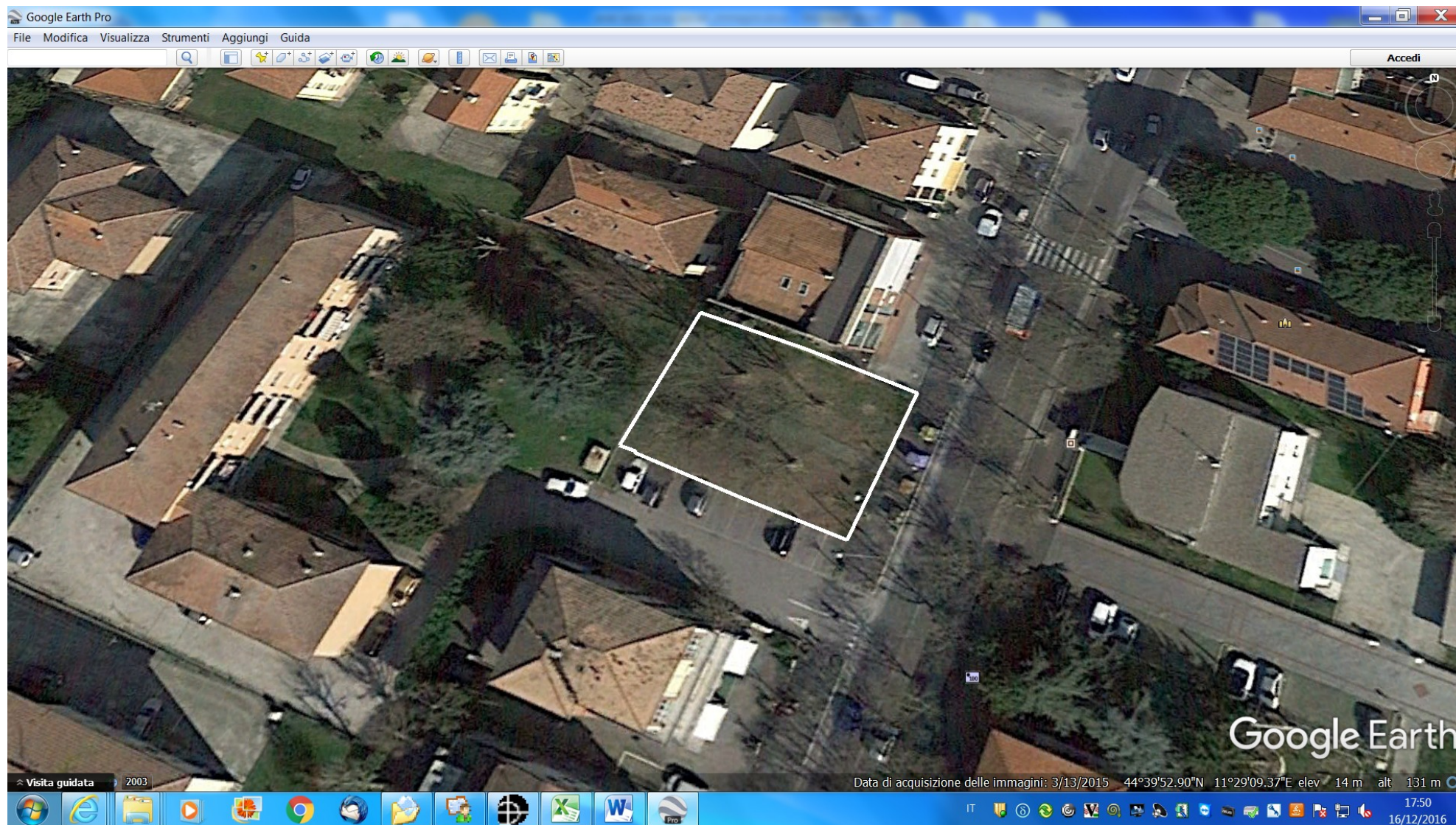
ALTEDO (Via Minghetti, area giochi) - MQ 1200



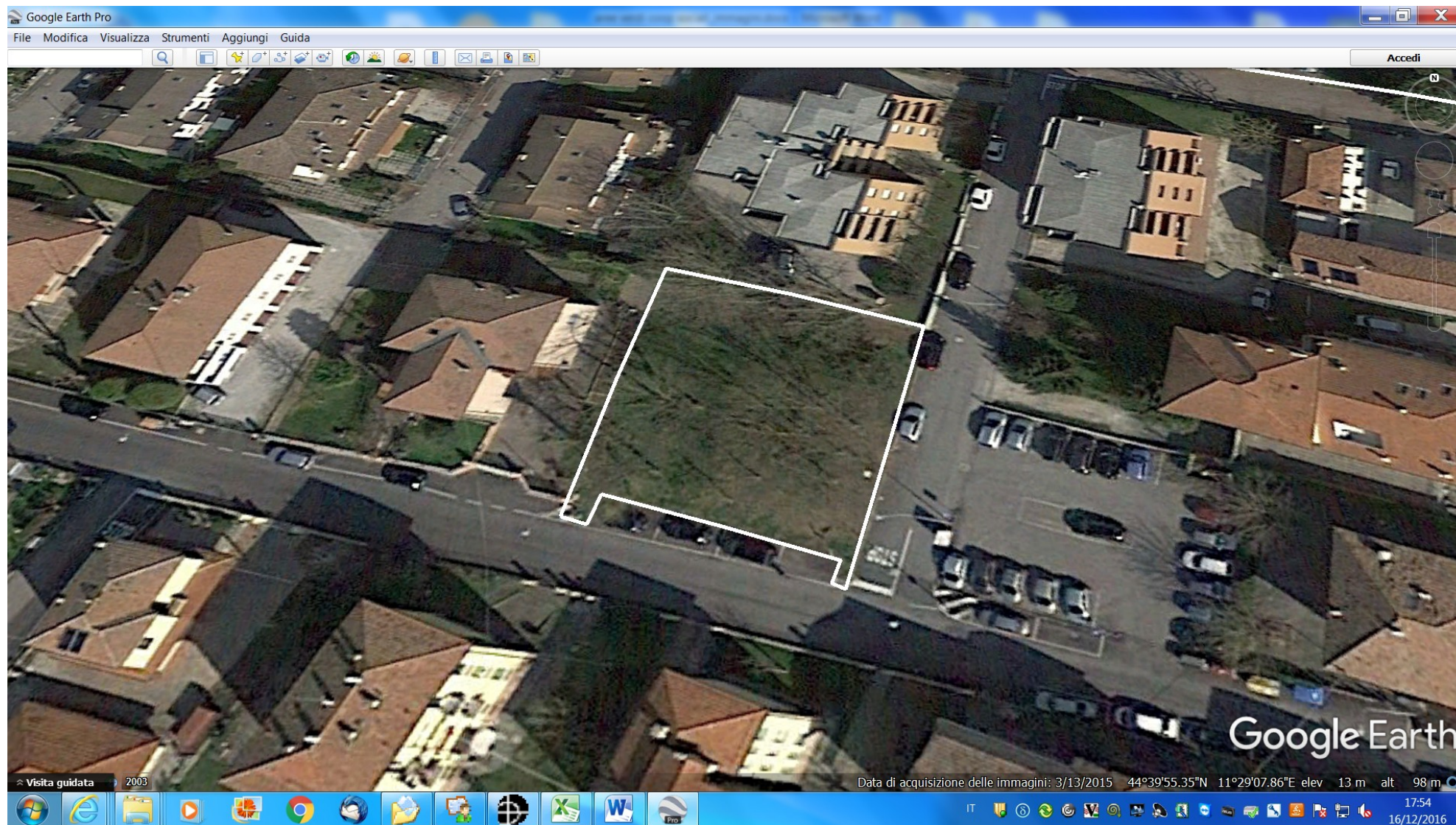
ALTEDO (Parco Luna) - MQ 5020



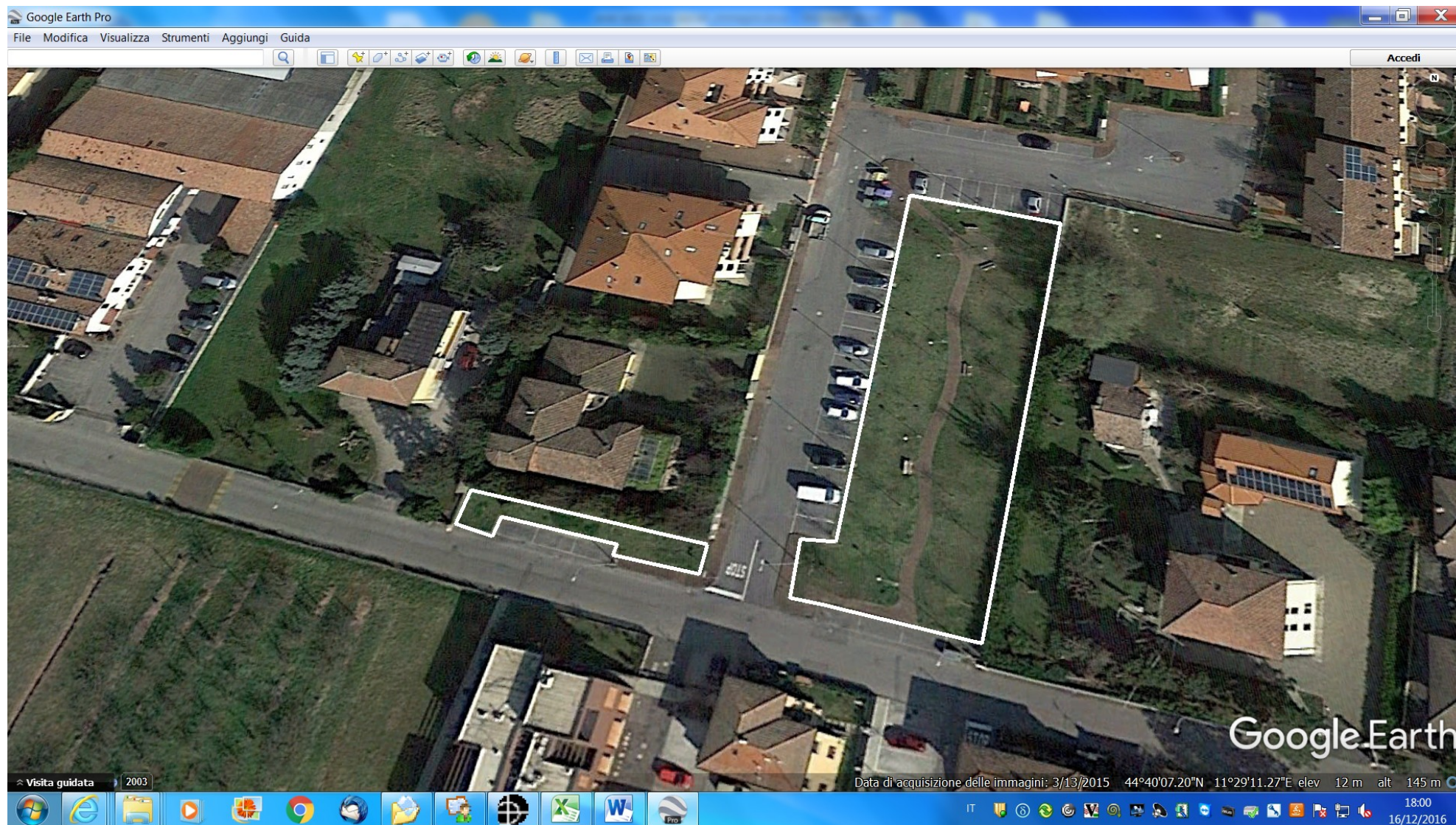
ALTEDO (Via Nazionale n. 90) - MQ 490



ALTEDO (Via Castellina ang. Via XXV Aprile) - MQ 740



ALTEDO (Via Vespignani) - MQ 1593



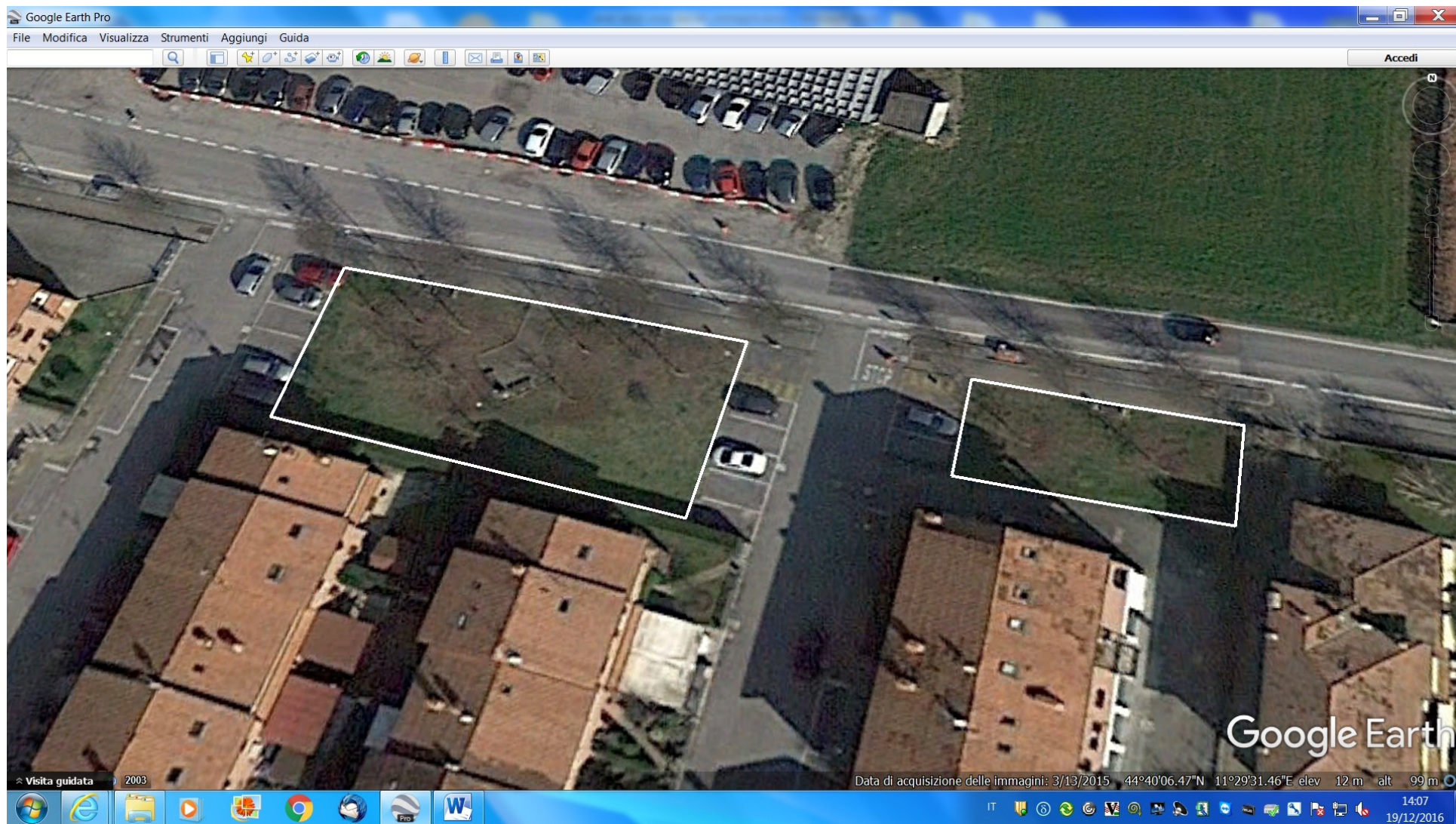
ALTEDO (Scuola Elementare/Media) - MQ 2320



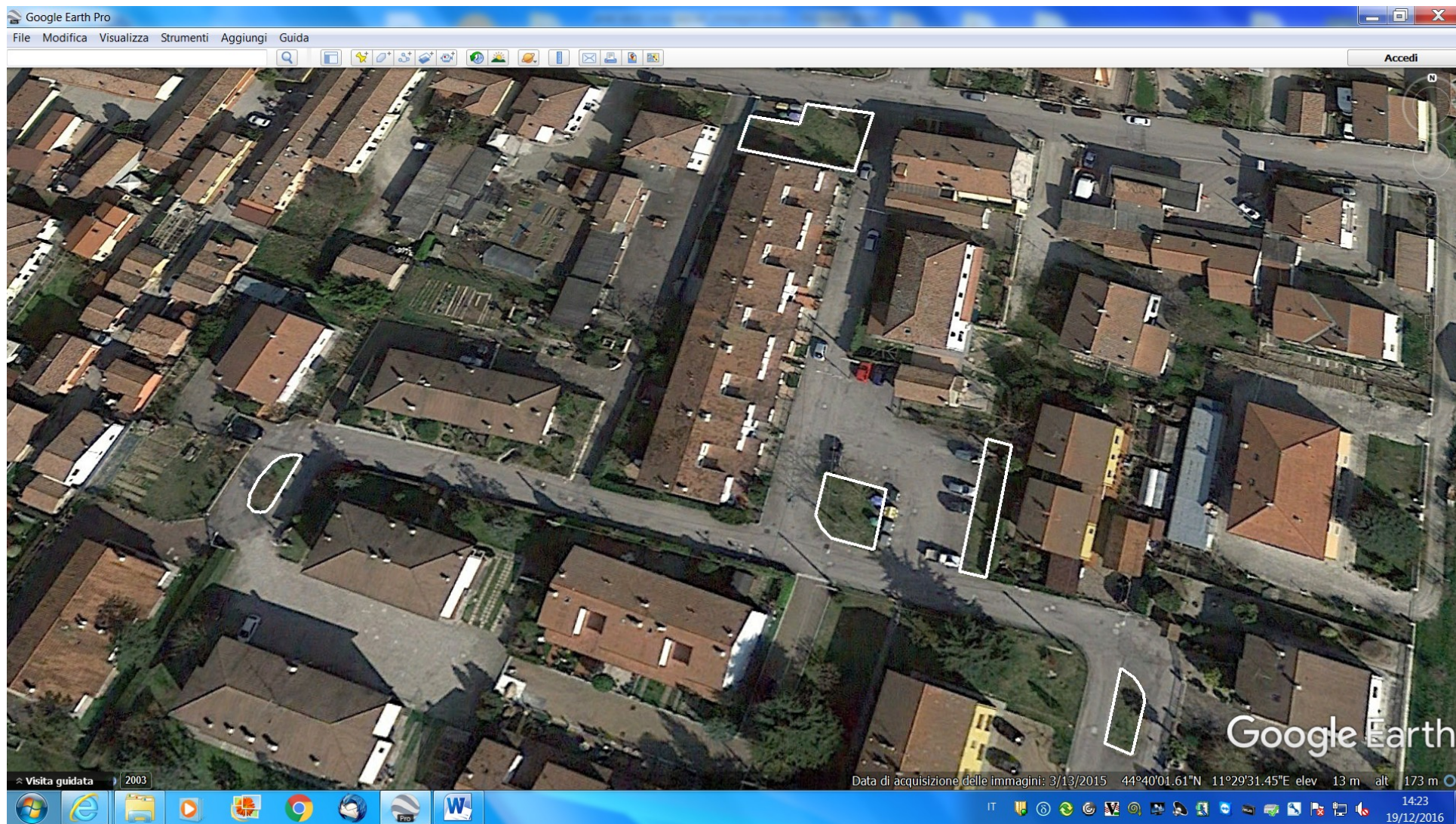
ALTEDO (Scuola Materna) - MQ 2695



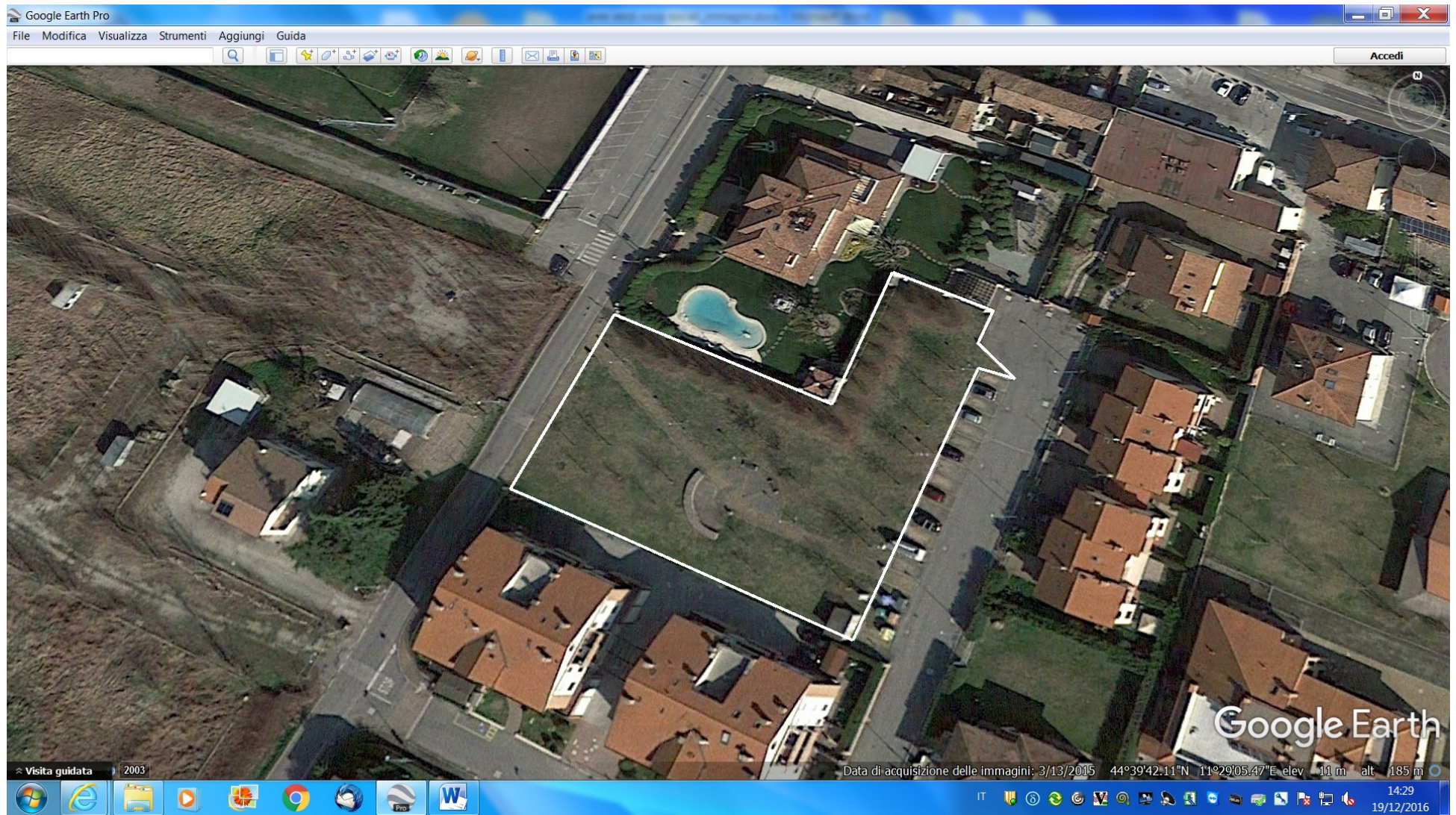
ALTEDO (Via 1 Maggio) - MQ 723



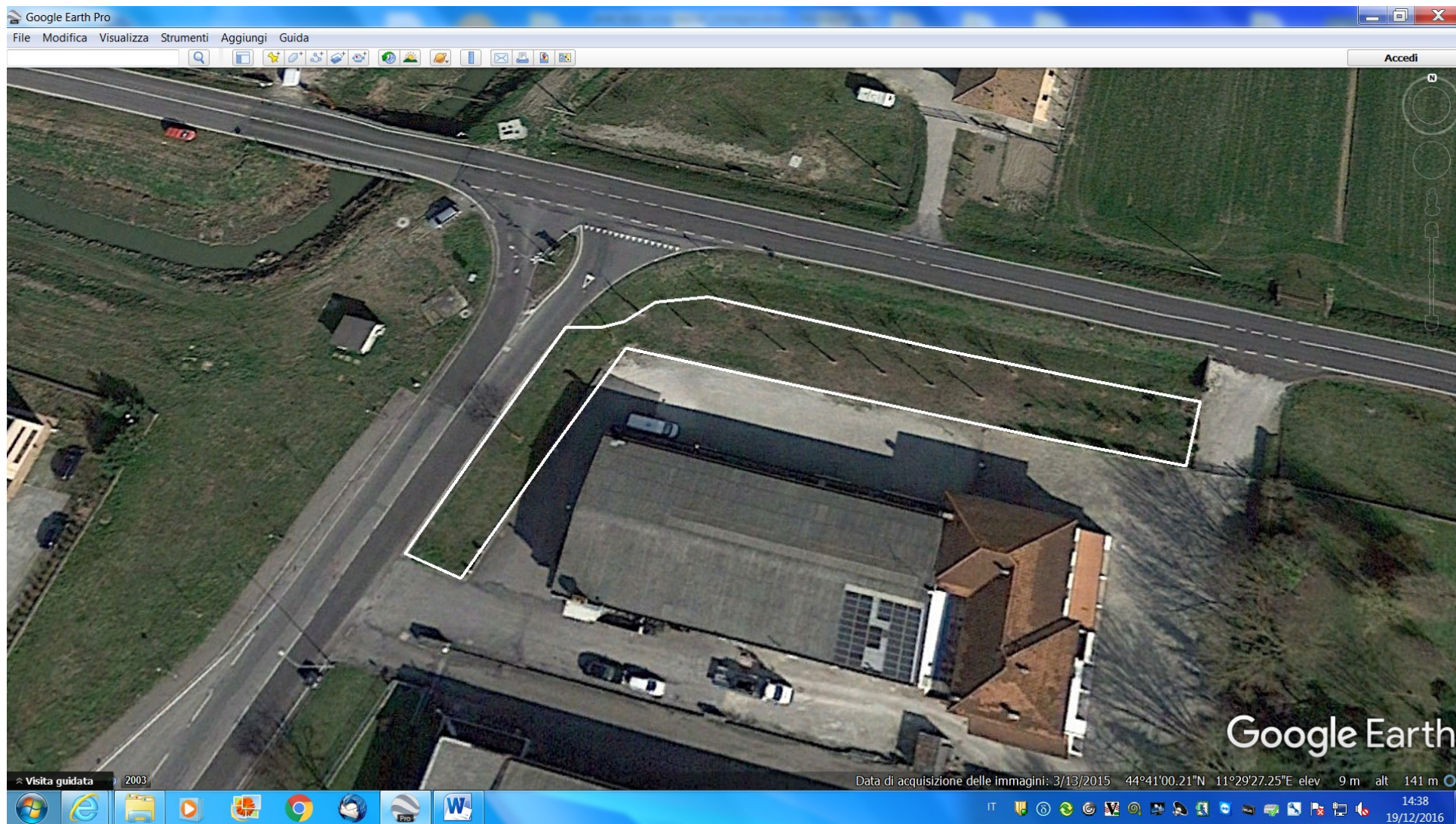
ALTEDO (Via Parri + Via del Borgo) - MQ 550



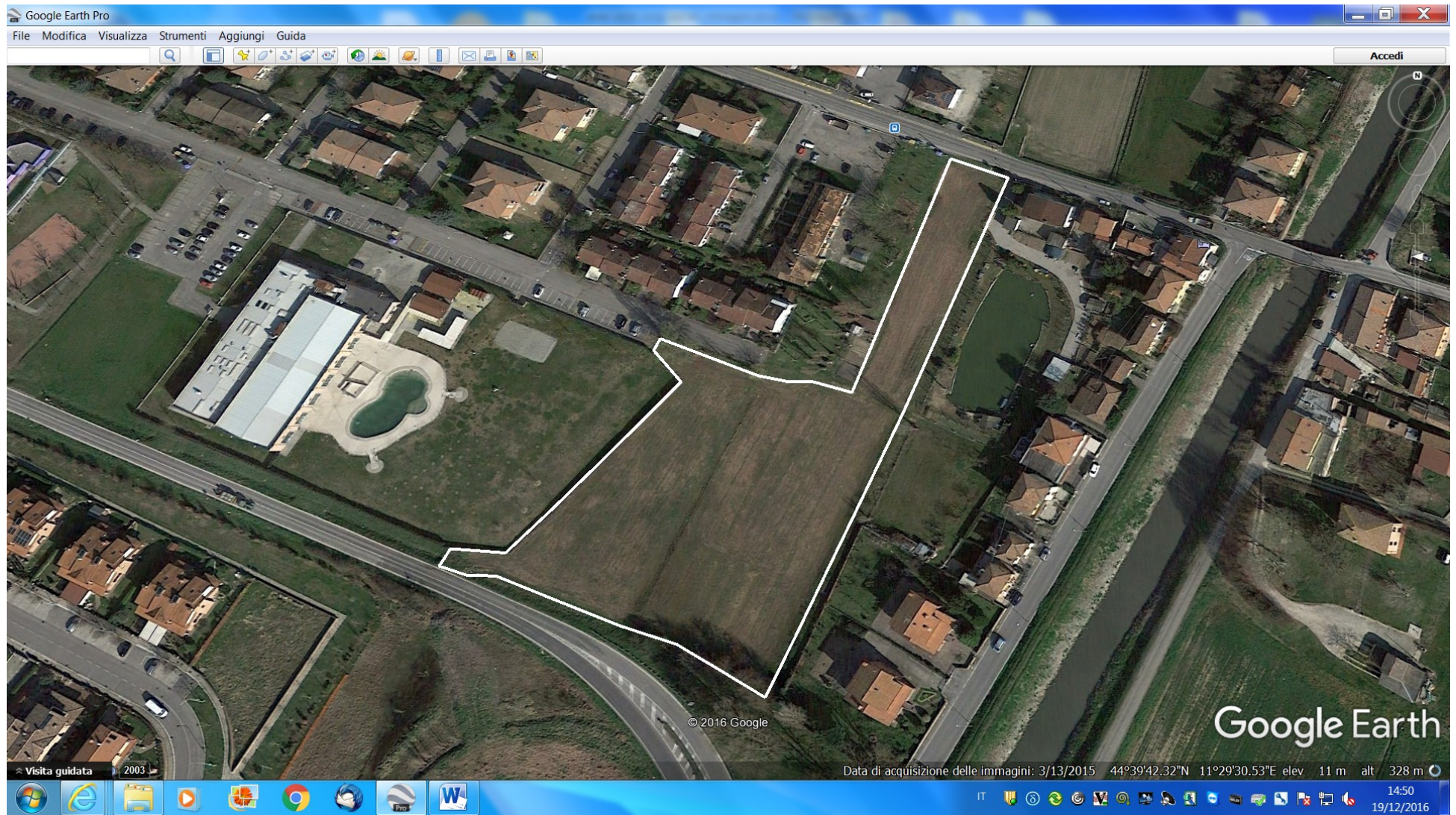
ALTEDO (Via Mezzetti) - MQ 2538



ALTEDO (Viale 11 Settembre incr. SP 20 lato destro) - MQ 602



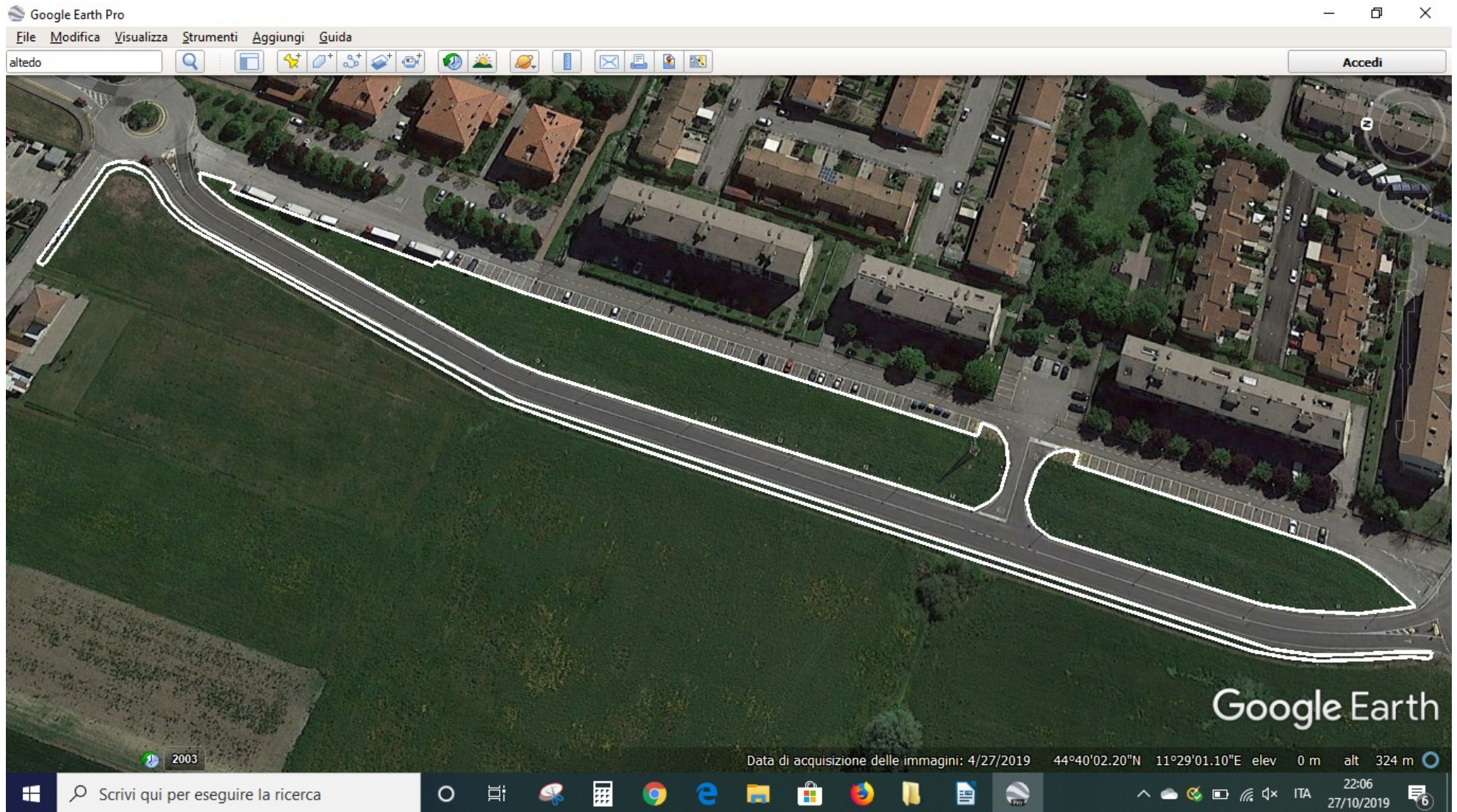
ALTEDO (Via Gagarin - dopo piscina) - MQ 8400



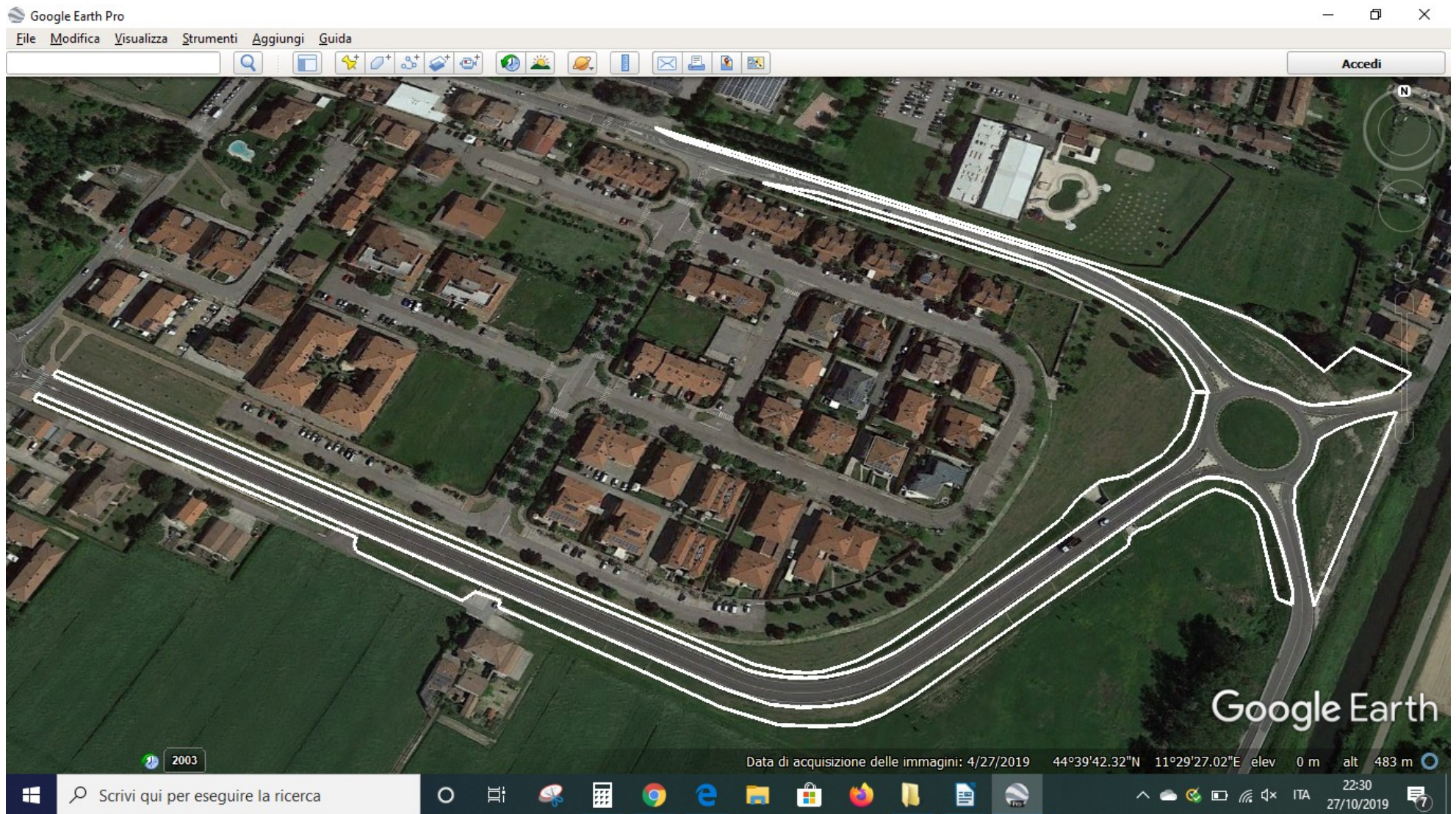
ALTEDO (Area sgambamento cani + limitrofa) - MQ 3500



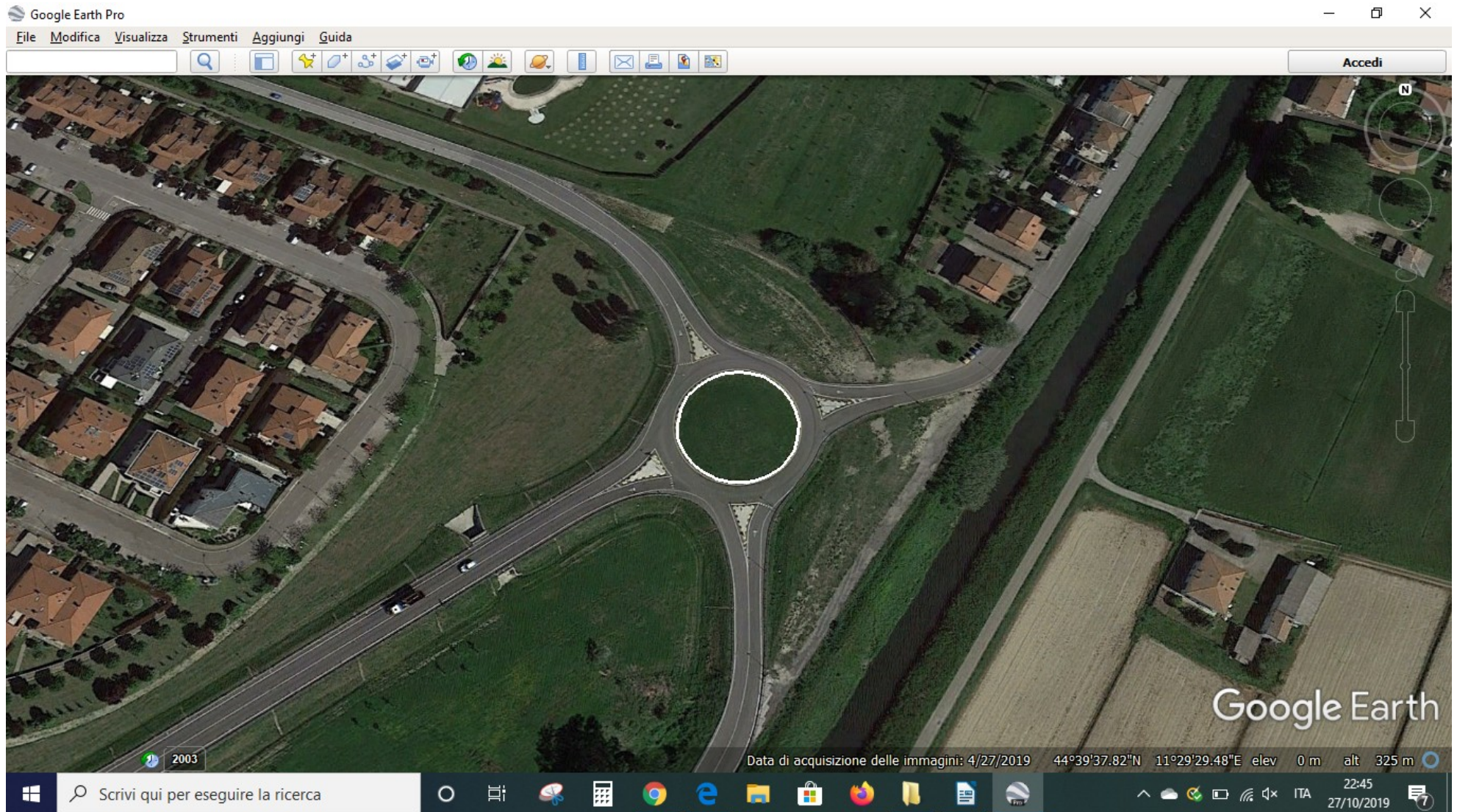
ALTEDO (Viale 11 Settembre, da Via Roma a Via Castellina) - MQ 7200



ALTEDO (Viale 11 Settembre, da Via Bassa Inf. a Via Nazionale) - MQ 10500 (compresi cigli e scarpate)



ALTEDO (Via Nazionale, rotonda ingresso sud) - MQ 1000



ALTEDO (Via Nazionale, area ciliegi ingresso sud) - MQ 13700

